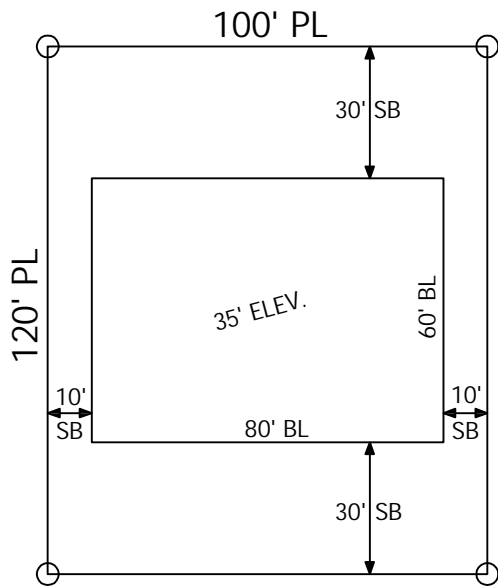


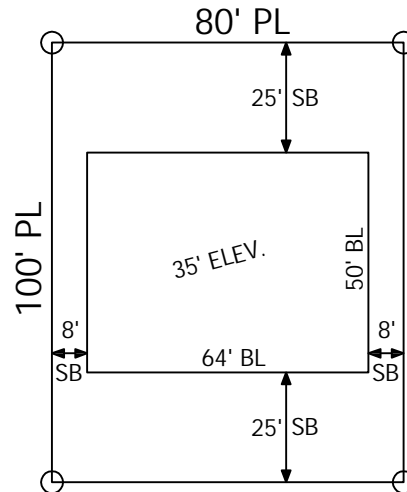
# RESIDENTIAL LOT-ZONING REQUIREMENTS

**R-1** LOW DENSITY RESIDENTIAL DISTRICT



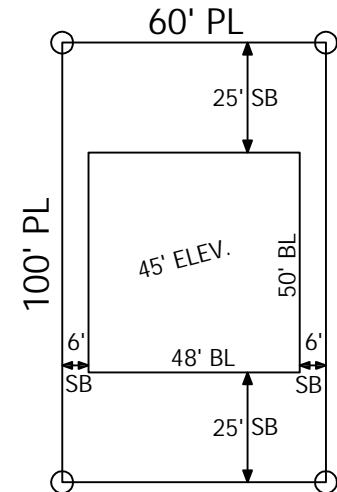
MINIMUM LOT SIZE = 12,000 SQFT  
 MINIMUM LOT WIDTH = 100 FT  
 MINIMUM FRONT SETBACK = 30 FT  
 MINIMUM SIDE YARD SETBACK = 10 FT  
 MINIMUM REAR YARD SETBACK = 30 FT  
 MAXIMUM HEIGHT PRINCIPAL STRUCTURE = 35 FT  
 MAXIMUM ACCESSORY STRUCTURE HEIGHT = 15 FT  
 MAXIMUM LOT COVERAGE = 25% = 3,000 SQFT  
 MAXIMUM VOLUME = 168,000 CUFT

**R-2** MEDIUM DENSITY RESIDENTIAL DISTRICT



MINIMUM LOT SIZE = 8,000 SQFT  
 MINIMUM LOT WIDTH = 80 FT  
 MINIMUM FRONT SETBACK = 25 FT  
 MINIMUM SIDE YARD SETBACK = 8 FT  
 MINIMUM REAR YARD SETBACK = 25 FT  
 MAXIMUM HEIGHT PRINCIPAL STRUCTURE = 35 FT  
 MAXIMUM ACCESSORY STRUCTURE HEIGHT = 15 FT  
 MAXIMUM LOT COVERAGE = 30% = 2,400 SQFT  
 MAXIMUM VOLUME = 112,000 CUFT

**R-3** HIGH DENSITY RESIDENTIAL DISTRICT



MINIMUM LOT SIZE = 6,000 SQFT  
 MINIMUM LOT WIDTH = 60 FT  
 MINIMUM FRONT SETBACK = 25 FT  
 MINIMUM SIDE YARD SETBACK = 6 FT  
 MINIMUM REAR YARD SETBACK = 25 FT  
 MAXIMUM HEIGHT PRINCIPAL STRUCTURE = 45 FT  
 MAXIMUM ACCESSORY STRUCTURE HEIGHT = 15 FT  
 MAXIMUM LOT COVERAGE = 35% = 2,100 SQFT  
 MAXIMUM VOLUME = 108,000 CUFT